

Fort Collins Bicycle Accident Summary, 2010

Table 1 shows the number of bicycle accidents in Fort Collins from January 1, 2000 – December 31, 2009 that happen on the public right-a-way.

TABLE 1 – BICYCLE ACCIDENTS BY YEAR

	2000	2001	2002	2003	2004	2005	2006	2007	2008	2009	2009 %Δ vs. prev. 3 yr. avg.
Non-Injury Accidents	33	32	30	30	30	51	41	47	48	45	0%
Injury Accidents	79	70	76	73	87	73	66	93	92	105	+25%
Fatal Accidents	1	0	0	0	1	0	0	0	2	1	+50%
Total Accidents	113	102	106	103	118	124	107	140	142	151	+16.45%

Table 2 shows the bicycle accident rate (in accidents per 1,000 population) in Fort Collins taking into account the population increase that has occurred. The average accident rate for the 9 year period is 0.94 accidents/1,000 population.

TABLE 2 – BICYCLE ACCIDENTS/1,000 POPULATION

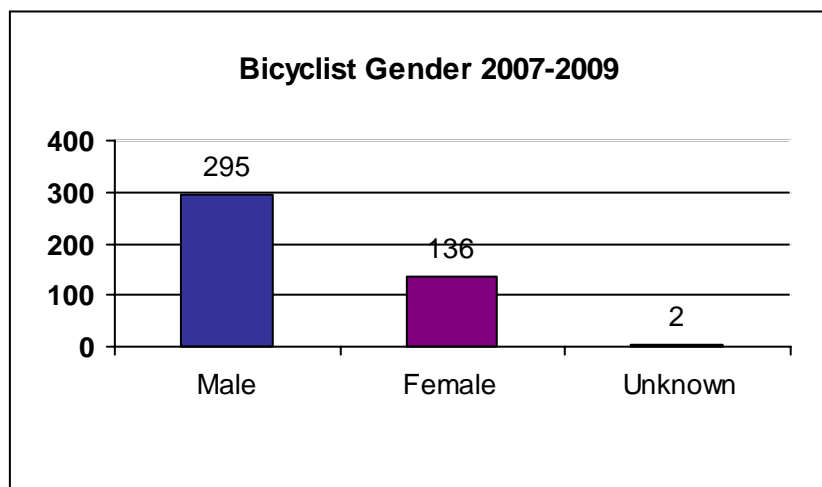
	2000	2001	2002	2003	2004	2005	2006	2007	2008	2009	2009 %Δ vs. prev. 3 yr. avg.
Population (In Thousands)	118.6	112.5	124.4	125.4	126.9	127.6	129.5	134.1	136.4	137.2	
Accident Rate	0.95	0.91	0.85	0.82	0.93	0.97	0.83	1.04	1.04	1.10	+14.1%

Table 3 shows the age of bicyclists involved in accidents in Fort Collins from 2007 - 2009. Note that there were 47 bicycle accidents during this time period where the age of the bicyclist was not reported and two accidents that involved more than one bicyclist.

**TABLE 3 – BICYCLE ACCIDENTS
BY BICYCLIST AGE**

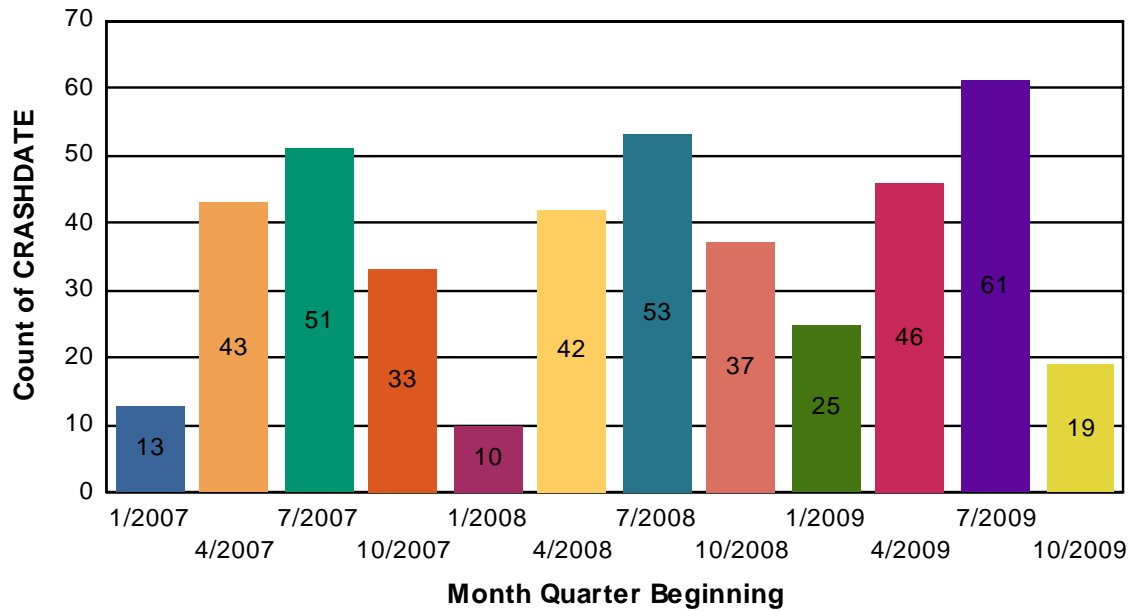
	2007	2008	2009	Total	% of Accidents
0-4	0	0	0	0	0
5-9	3	3	1	7	1.6
10-14	11	4	6	21	4.8
15-19	30	31	26	87	20.
20-24	25	34	50	109	25.1
25-34	27	20	33	80	18.4
35-44	12	12	10	34	7.8
45-54	11	12	5	28	6.4
55-64	1	4	7	12	2.8
65-74	2	3	0	5	1.15
75-84	0	1	2	3	.46
85+	0	0	1	1	.2
Unknown	19	18	11	47	11.3
Total Accidents	141	142	152	435	100%

The graph to the right shows the gender of bicyclists involved in bike accidents between 2007 - 2009.



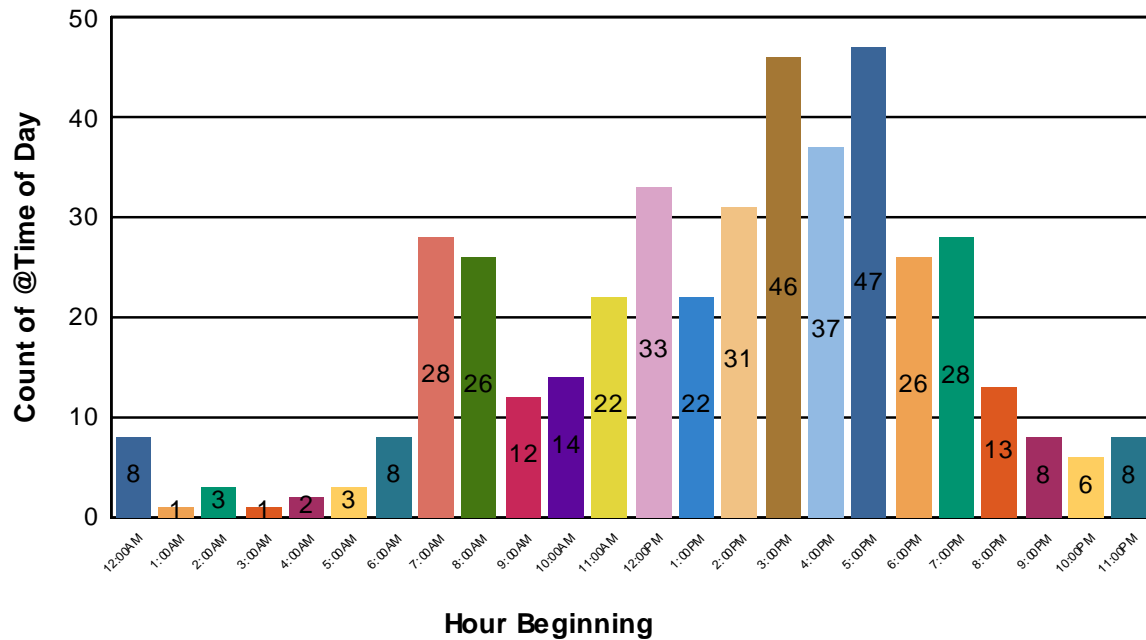
Collisions By Date For Jan 1, 2007- Dec 31, 2009

Sorted By Quarter



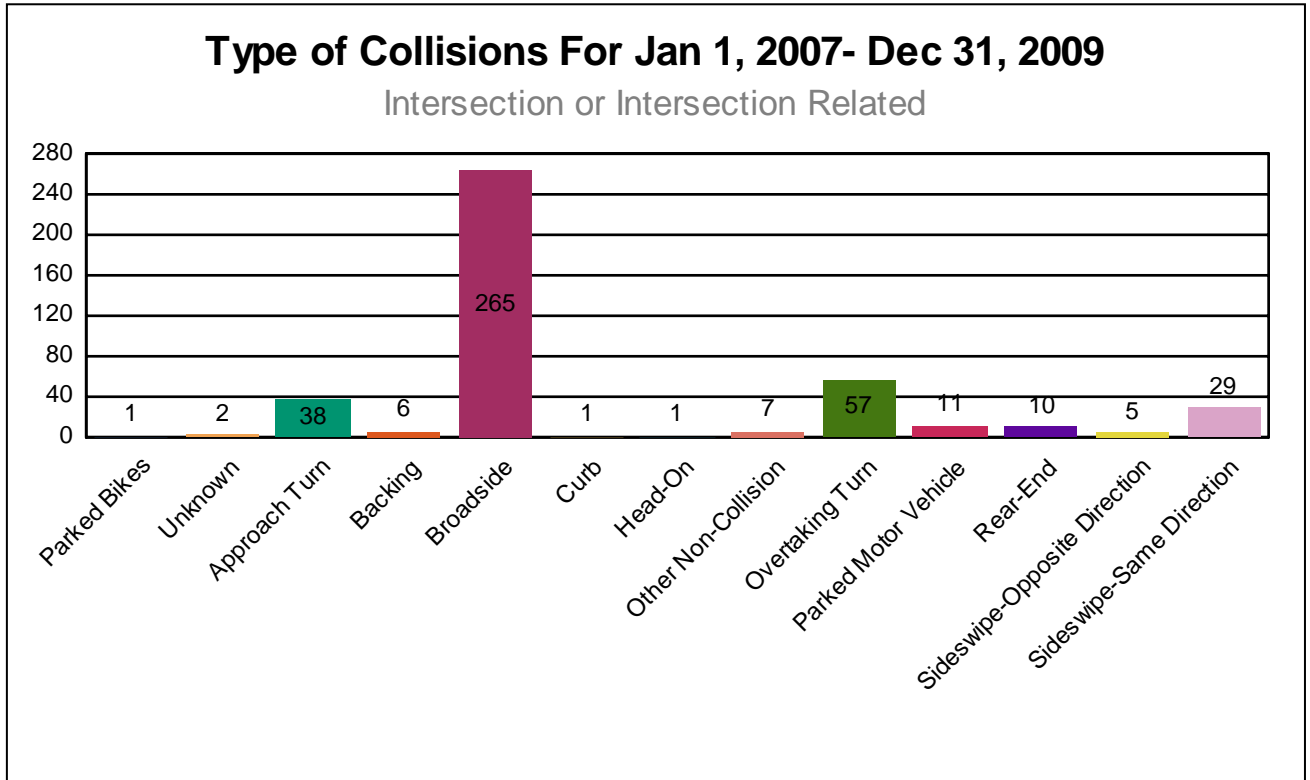
Collisions By Time For Jan 1, 2007- Dec 31, 2009

Time of Day



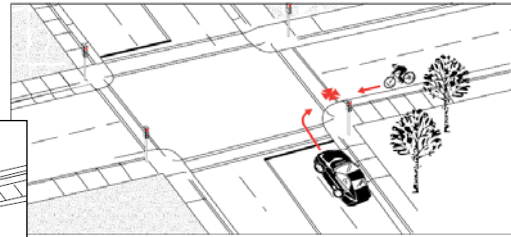
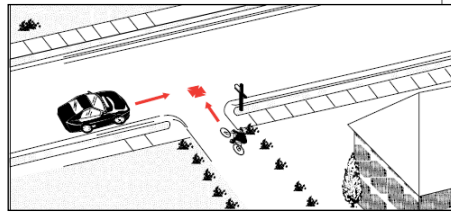
Types of Collisions

Bicycle accidents can be further broken down into various types of accidents based on the circumstances. Types of bicycle accidents and the number of each type in Fort Collins from January 1, 2007 – December 31, 2009 are shown below:



Broadside or Right Angle Accidents at Intersections – 265 Collisions (61.2%)

Accidents where a bicyclist hits or is hit by a vehicle on a perpendicular roadway/driveway.

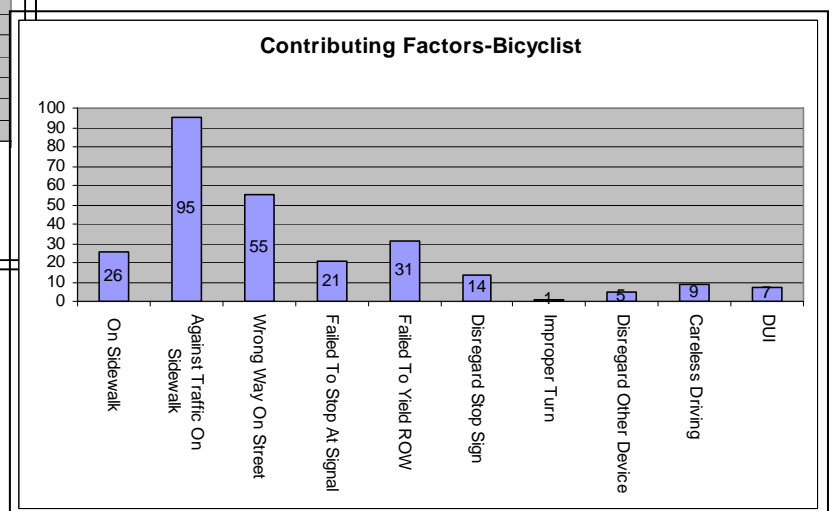
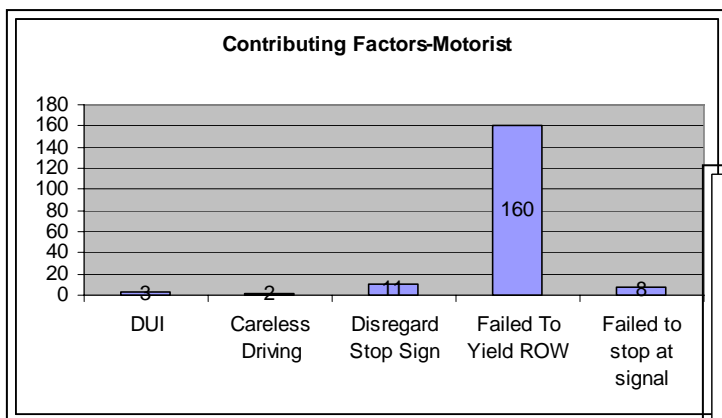


These accidents are further sub-categorized in the following table.

Broadside Collisions						
Description	Right Turning Vehicle	Left Turning Vehicle	Straight	Total Number of Collisions	Injury Collisions	Fatal
<u>Bike Riding <i>Against</i> Traffic</u>						
Bike on sidewalk/crosswalk	79	6	10	95	60	
Bike in the Street	38	7	7	52	30	
Bike Unknown Location	2	1	2	5	2	
<u>Bike Riding <i>Against</i> Traffic</u>	119	14	19	152	92	0
<u>Bike Riding <i>With</i> Traffic</u>						
Bike on sidewalk/crosswalk*	9	3	18	30	21	
Bike in the Street	11	14	33	58	45	
<u>Bike Riding <i>With</i> Traffic</u>	20	17	51	88	66	0
<u>Unknown Location of Bike</u>						
	10	2	13	25	11	1
Total	149	33	83	265	169	1

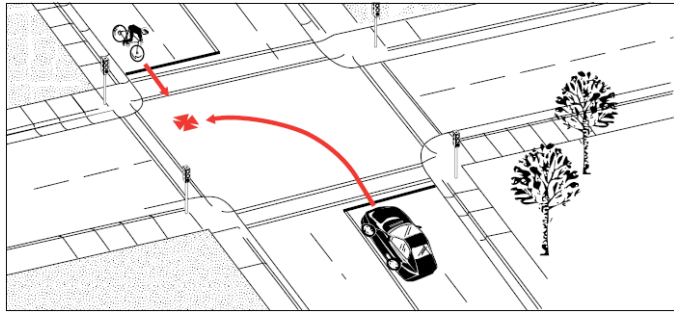
*Note: two were at mid block pedestrian crossings

Table 4



Approach Turn Accidents at Intersections – 38 Collisions (8.8%)

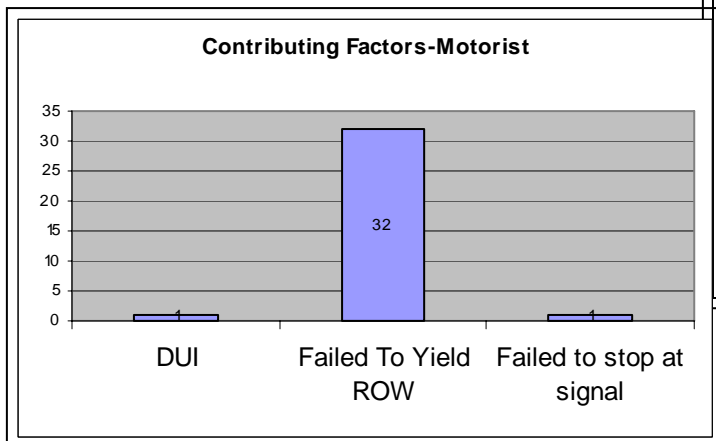
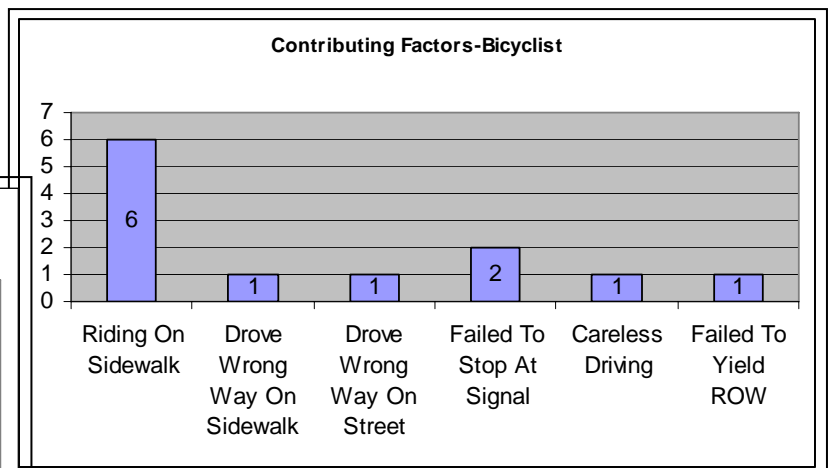
Accidents where a bicyclist hits or is hit by a vehicle approaching from the opposite direction and turning right or left.



These accidents are further sub-categorized in the following table.

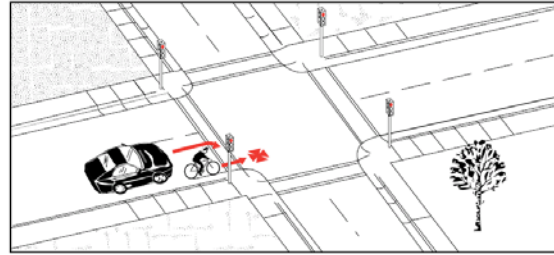
Approach Turns			
Description	Number of Collisions	Injury Collisions	Fatal
<u>Bike Riding <i>Against</i> Traffic</u>			
Bike on sidewalk/crosswalk	1		
Bike in the Street	1		
Bike Unknown Location	0		
<u>Bike Riding <i>Against</i> Traffic</u>	2	0	0
<u>Bike Riding <i>With</i> Traffic</u>			
Bike on sidewalk/crosswalk	6	4	
Bike in the Street	28	23	
Bike Unknown Location	1		
<u>Bike Riding <i>With</i> Traffic</u>	35	27	0
<u>Unknown Location of Bike</u>			
	1	1	
Total	38	28	0

Table 5



Overtaking Turn Accidents at Intersections – 57 Collisions (13.2%)

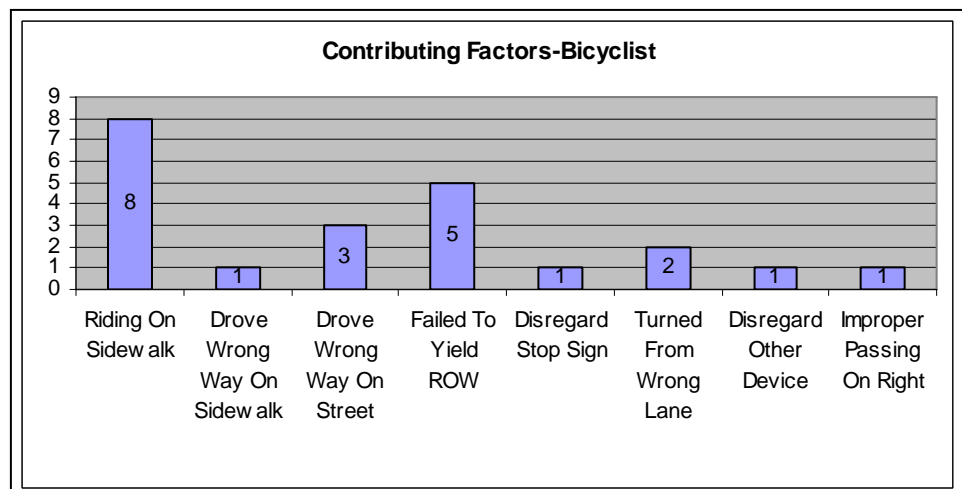
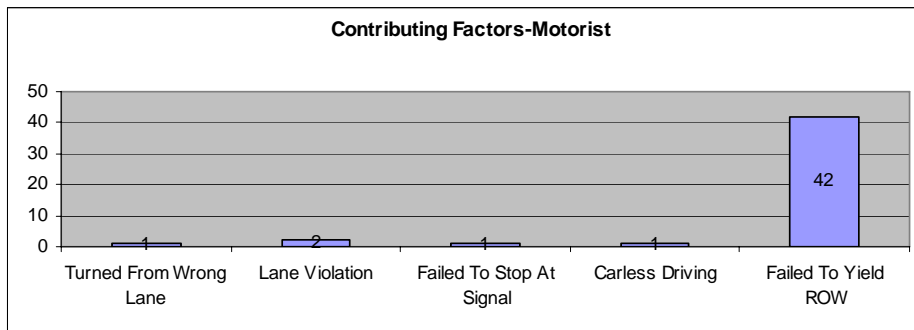
Accidents where a bicyclist hits or is hit by a vehicle traveling in the same direction as the bicyclist (approaching from behind) and turning right or left



These accidents are further sub-categorized in the following table.

Overtaking Turns			
Description	# of Collisions	Injury Collisions	Fatal
<u>Bike Riding <i>Against</i> Traffic</u>			
Bike on sidewalk/crosswalk	1	1	
Bike in the Street	3	3	
<u>Bike Riding <i>Against</i> Traffic</u>	4	4	0
<u>Bike Riding <i>With</i> Traffic</u>			
Bike on sidewalk/crosswalk	8	6	
Bike in the Street	43	34	
<u>Bike Riding <i>With</i> Traffic</u>	51	40	0
<u>Unknown Location of Bike</u>			
	2	1	
Total	57	45	0

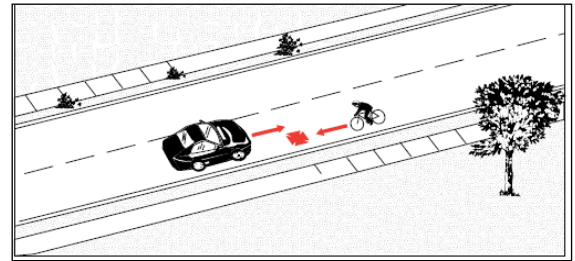
Table 6



Sideswipe Accidents – 34 Collisions (7.9%)

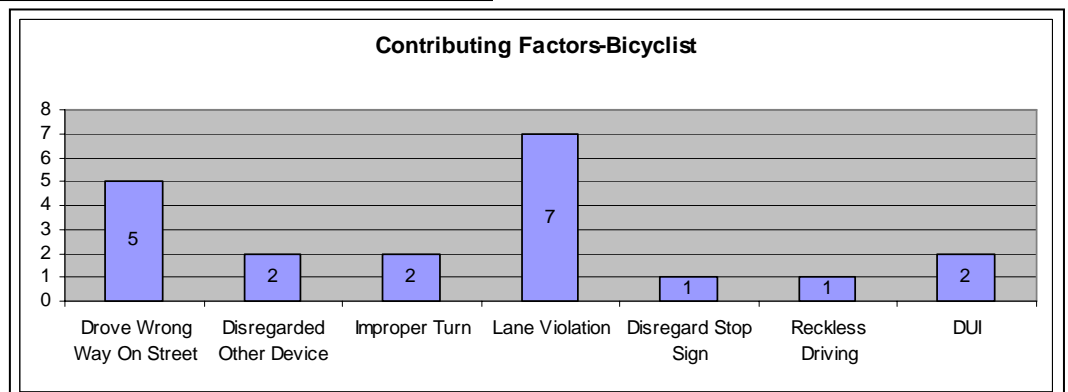
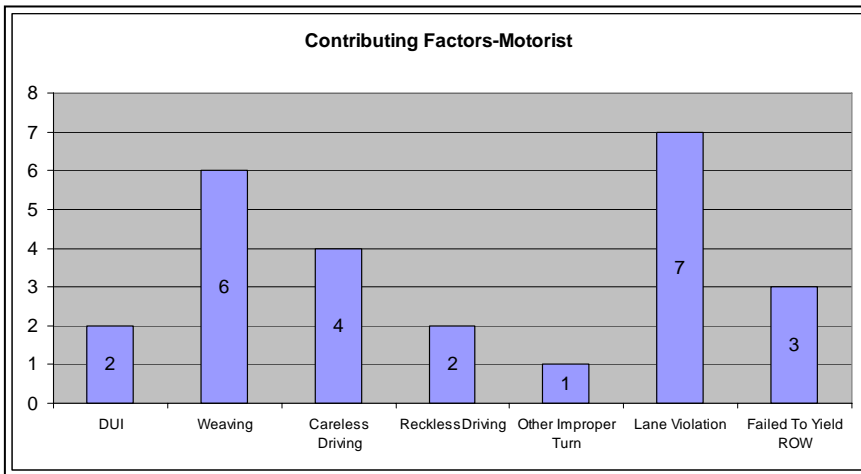
Accidents where a bicyclist hits or is hit by a vehicle traveling in the same direction or opposite direction as the bicyclist or car is changing lanes, passing or weaving.

These accidents are further sub-categorized in the following table.



Sideswipe			
Description	Number of Collisions	Injury Collisions	Fatal
Opposite Direction			
Bike Riding <i>Against</i> Traffic In Street	5	3	1
Total Sideswipe Opposite Direction			
Same Direction			
Bike Riding <i>Against</i> Traffic In Street	2	2	0
Bike Riding <i>With</i> Traffic In Street	24	14	1
Unknown Location of Bike	3	2	
Total Sideswipe Same Direction			
Total	34	21	2

Table 7

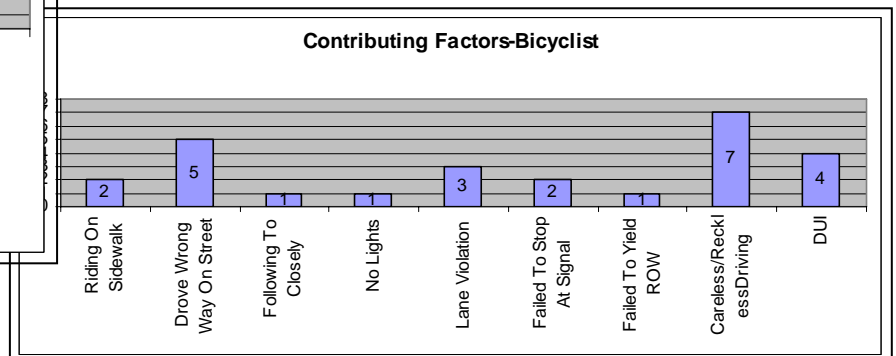
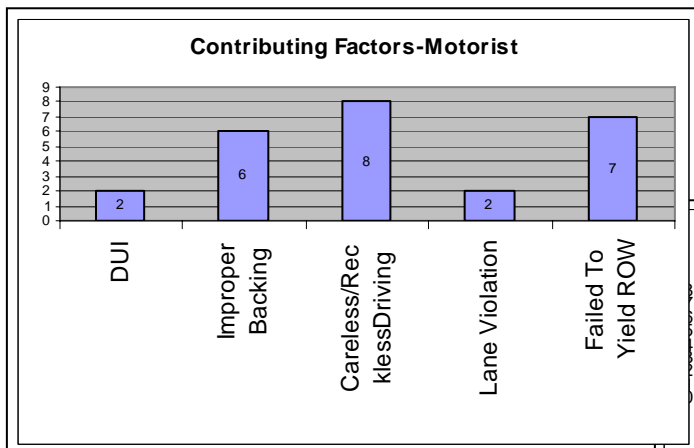


Other Collisions – 39 (9.0%)

These accidents are further sub-categorized in the following table.

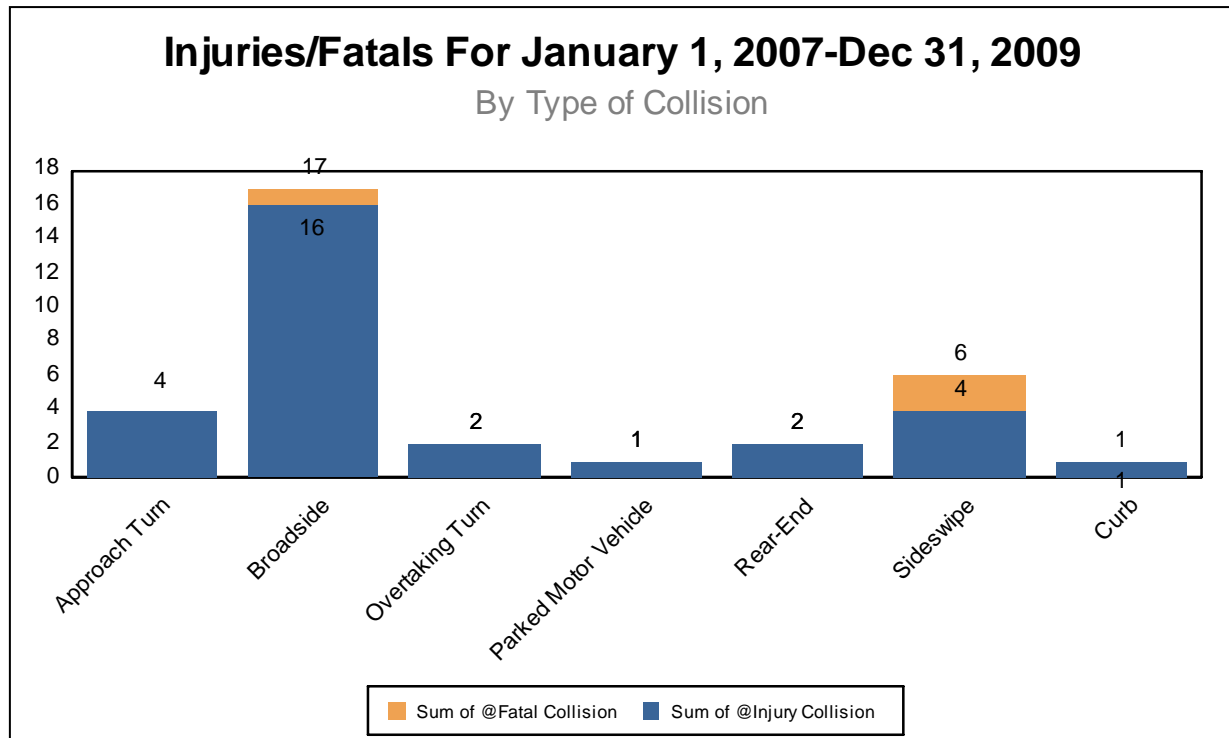
Other Collisions			
Description	Number of Collisions	Injury Collisions	Fatal
Head-On			
Bike Riding With Traffic In Street	1	0	
Total Head-On	1	0	0
Rear-End			
Bike Riding <i>Against</i> Traffic In Street	1		
Bike Riding <i>With</i> Traffic In Street	9	6	
Total Rear-End	10	6	0
Backing			
Bike Riding <i>With</i> Traffic In Street	3	3	
Bike Riding <i>With</i> Traffic On Sidewalk/Crosswalk	1		
Bike Riding <i>Against</i> Traffic On Sidewalk/Crosswalk	1	1	
Unknown Location of Bike	1	1	
Total Backing	6	5	0
Parked Motor Vehicles			
Bike Riding <i>Against</i> Traffic In Street	3	3	
Bike Riding <i>Against</i> Traffic On Sidewalk/Crosswalk	1	0	
Bike Riding <i>With</i> Traffic In Street	6	5	
Unknown Location of Bike	1	1	
Total Parked Motor Vehicles	11	9	0
Curb			
Bike Riding <i>With</i> Traffic In Street	1	1	0
Total Curb	1	1	0
Non Collision			
Bike Riding <i>With</i> Traffic In Street	5	4	
Unknown Location of Bike	2	1	
Total Non Collision	7	5	0
Others - Parked Bikes, No Info			
	3	1	
Total	39	27	0

Table 8



Severe Injury or Fatal Collisions

Of the 433 bicycle accidents reported between January 1, 2007 and December 31, 2009, thirty two of them were severe injury or fatal accidents. As shown below the trends for these serious accidents are similar to those shown above for all accidents.



These accidents are further sub-categorized in the following table.

Severe Injury/Fatal Collisions			
Description		Injury Collisions	Fatal
Approach Turn			
Bike riding with traffic on sidewalk/crosswalk		2	
Bike riding with traffic on street		2	
Total Approach Turn	12.5%	4	0
Broadside			
Bike riding against traffic on sidewalk/crosswalk		2	
Bike riding against traffic on street		5	
Bike riding with traffic on sidewalk/crosswalk		4	
Bike riding with traffic on street		5	
Unknown Location of Bike			1
Total Broadside	53.1%	16	1
Overtaking Turn			
Bike riding with traffic on sidewalk/crosswalk		1	
Bike riding with traffic on street		1	
Total Overtaking	6.3%	2	0
Rear-End			
Bike riding with traffic on street		2	
Total Rear End	6.3%	2	0
Sideswipe-Opposite Direction			
Bike riding against traffic on street		1	1
Total Sideswipe-Opposite Direction	6.3%	1	1
Sideswipe-Same Direction			
Bike riding against traffic on street		1	
Bike riding with traffic on street		1	1
Total Sideswipe-Same Direction	9.4%	2	1
Parked Motor Vehicle			
Bike riding with traffic on street		1	
Total Parked Motor Vehicle	3.1%	1	0
Curb			
Bike riding with traffic on street		1	
Total Curb	3.1%	1	0
Total	100%	29	3